



NOV 2023

GREEN ENLIGHTENMENT

# DERBYSHIRE

The Centre of the World.



# DERBY & DERBYSHIRE

## **Industrial Revolution Heritage:**

Derbyshire played a significant role in the Industrial Revolution. The Derwent Valley Mills, a UNESCO World Heritage Site, showcases the area's industrial history, making it an educational and historical attraction.

Part of the Age of Enlightenment - members of lunar society - most notable Erasmus Darwin

## **Peak District National Park,**

established in 1951, was indeed the first national park in England. It holds the distinction of being the inaugural national park in the United Kingdom. The creation of the Peak District National Park marked a significant milestone in the conservation and preservation of natural landscapes for public enjoyment.

## **Erasmus Darwin**

resided in Derby, and his connection with the town is often associated with his membership in the Lunar Society, a group of intellectuals and industrialists who met regularly to discuss scientific and philosophical ideas. The Lunar Society, active during the late 18th century, included prominent figures such as James Watt, Josiah Wedgwood, and Joseph Priestley.



# BAKEWELL TART







# WHO ARE WE?



# DOWN TO EARTH

We regenerate the places we live through nature - connecting people with nature, their communities and themselves.

We do this through projects - the spaces we create and programmes - the things we can do in these spaces.

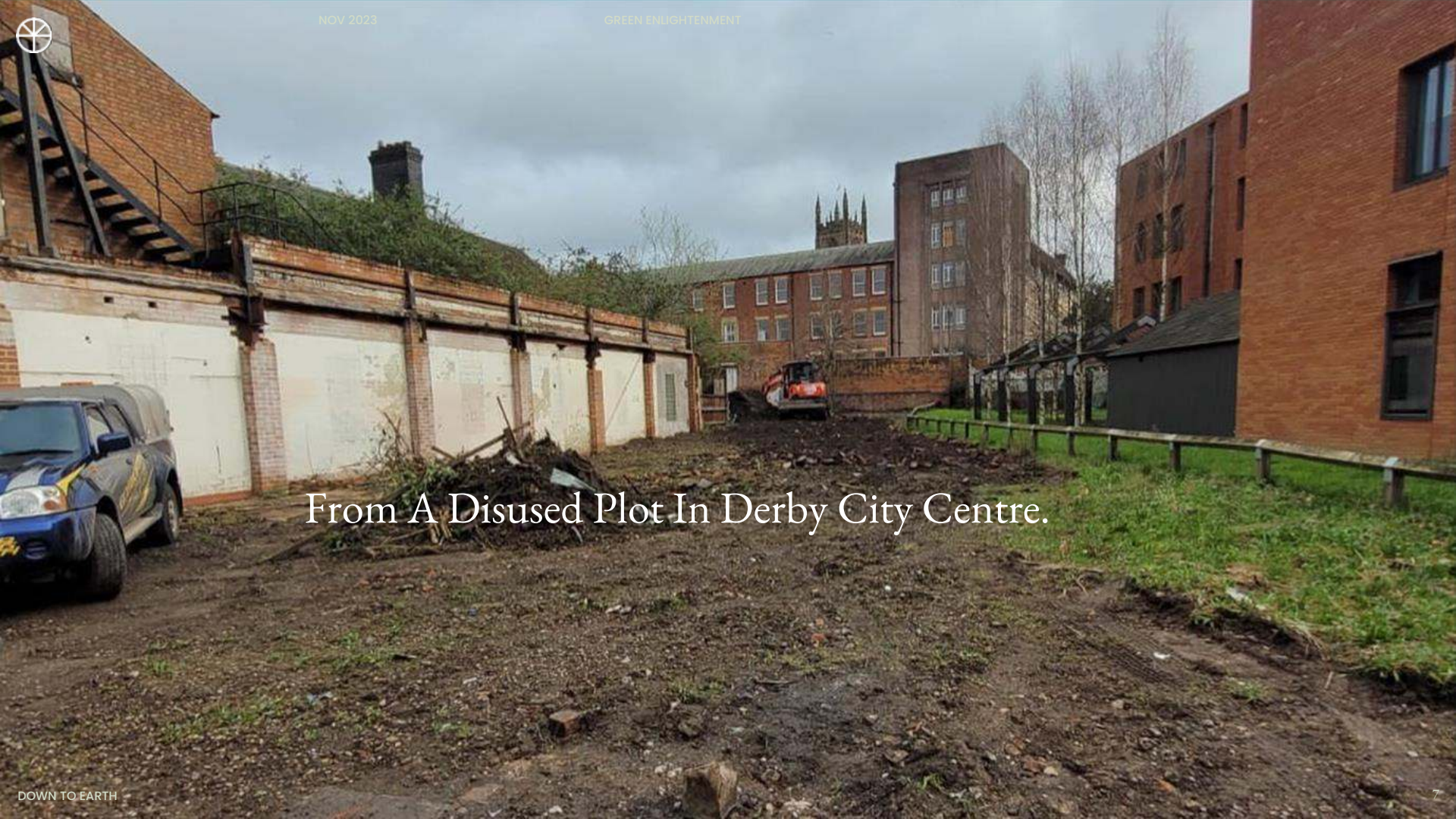




# ELECTRIC DAISY

A Catalyst For Change...





From A Disused Plot In Derby City Centre.



NOV 2023

GREEN ENLIGHTENMENT

# To An Award Winning Garden & Community Space





# A Step Toward A Cultural Hive For Everyone



# SO, WHAT IF...

Derbyshire became the Eco—  
Tourism focal point  
of the Country...

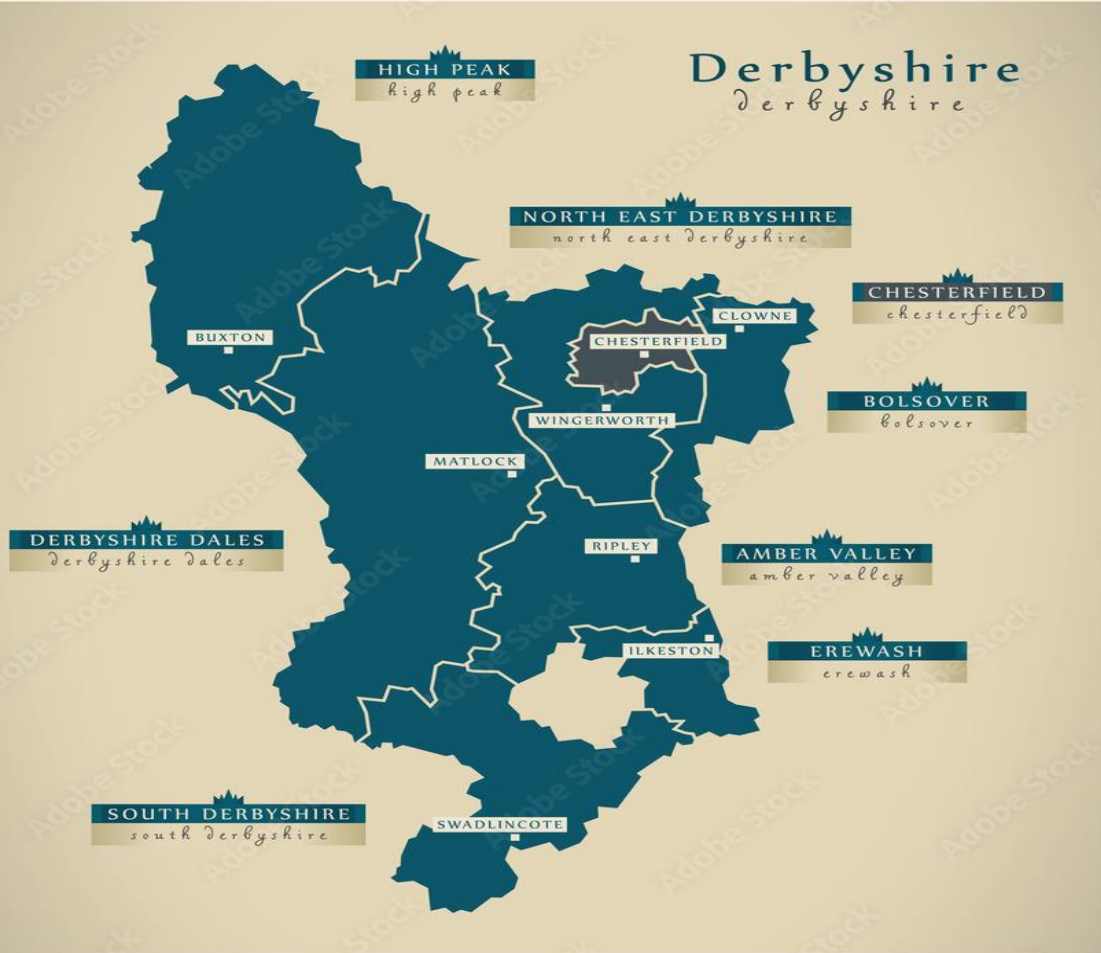




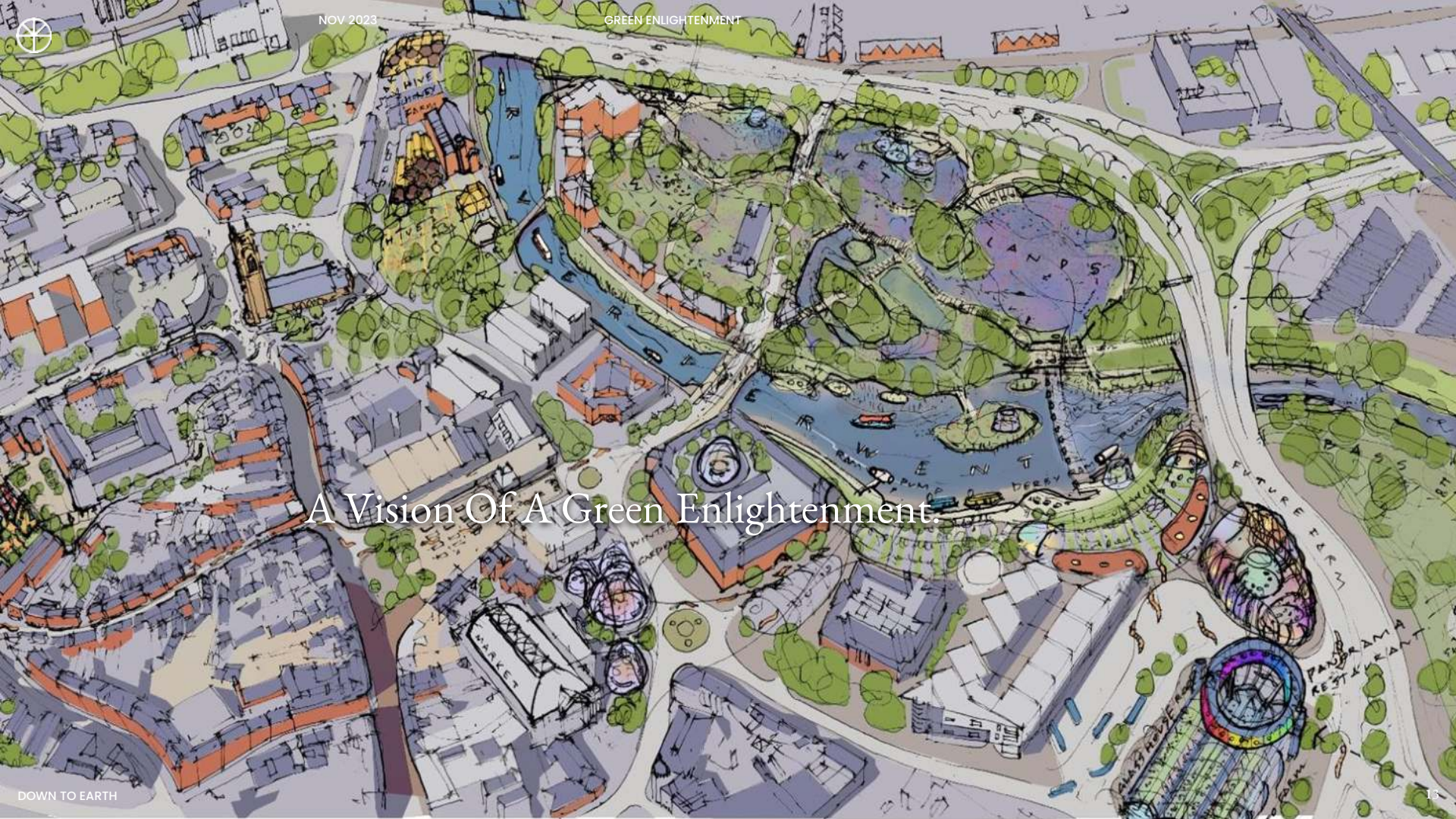
# Eden Project — Morcambe Bay

# Derbyshire

Derbyshire







NOV 2023

GREEN ENLIGHTENMENT

# A Vision Of A Green Enlightenment.



# WHY DERBY / DERBYSHIRE?

Derby's strategic position at the heart of England makes it easily accessible for domestic and international tourists. The city's excellent transportation infrastructure, including the M1 motorway and the East Midlands Airport, ensures seamless connectivity.

East Midlands Airport, located just a short distance from Derby, served over 4.5 million passengers in 2021.

**Proximity to Major Tourist Hubs:**  
Derby's proximity to major tourist destinations such as the Peak District and historic sites like Chatsworth House enhances its appeal to visitors. This creates an opportunity to position the Eden Project as a central point in a broader tourist itinerary.

The Peak District National Park, located within an hour's drive from Derby, attracts over 13 million visitors annually.





Thank You.

[dtederby.org](http://dtederby.org)  
[team@dtederby.org](mailto:team@dtederby.org)  
[@dtederby](https://www.instagram.com/dtederby)